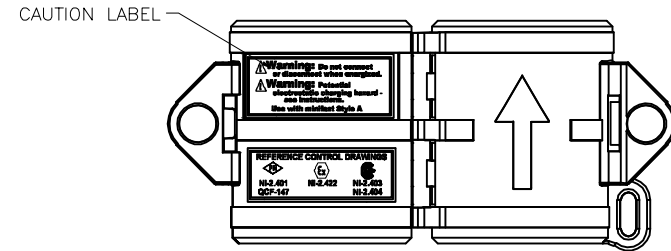
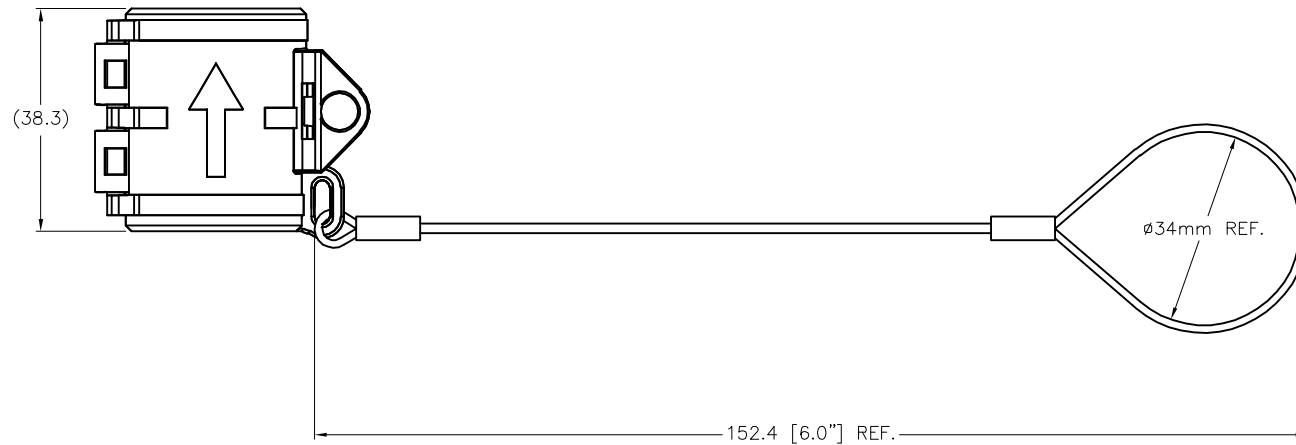
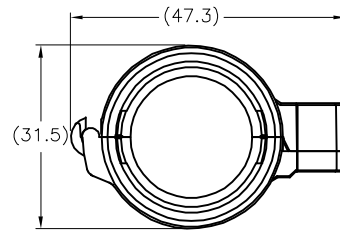


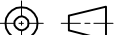

SPECIFICATIONS

| | |
|-------------------------|------------------------------|
| HOUSING MATERIAL/COLOR | NYLON 66/BLACK |
| LANYARD MATERIAL/FINISH | STAINLESS STEEL/NYLON-COATED |



OPENED VIEW OF LOCKOUT DEVICE

SOURCE DRAWING - FOR REFERENCE ONLY

| | | | | | | | |
|----------------------|--|---|--|--|--|--|--|
| RELATED DOCUMENTS | | 3RD ANGLE PROJECTION | | THIS DRAWING IS CONFIDENTIAL AND THE PROPERTY OF TURCK INC. USE OF THIS DOCUMENT WITHOUT WRITTEN PERMISSION IS PROHIBITED. | | 3000 CAMPUS DRIVE MINNEAPOLIS, MN 55441 1-800-544-7769 (763) 553-7300 (763) 553-0708 fax www.turck.us | |
| 1. 2. 3. 4. | |  | |  | | | |
| MATERIAL | | DRFT RDS | | DATE 02/19/16 | | DESCRIPTION | |
| | | APVD | | SCALE 1=1.3 | | LOCK-MINI W/SS LANYARD | |
| FINISH | | ALL DIMENSIONS DISPLAYED ON THIS DRAWING ARE FOR REFERENCE ONLY | | UNIT OF MEASUREMENT | | IDENTIFICATION NO. | |
| | | CONTACT TURCK FOR MORE INFORMATION | | MILLIMETERS | | A900036 | |
| | | | | DO NOT SCALE THIS DRAWING | | REV | |
| | | | | | | C | |
| | | | | | | FILE: A900036 | |
| | | | | | | SHEET 1 OF 2 | |

| | | | | |
|-----|------------------------------|-----|----------|---------|
| C | ADD SHEET #2 FOR APPLICATION | RDS | 04/01/19 | 69210 |
| REV | DESCRIPTION | BY | DATE | ECO NO. |